

FOR IMMEDIATE RELEASE

Validation test Dynamic Abutment Solutions' DMTools with *hyperDENT*®

Munich, December 12, 2017:

Machine tool: imes-icore, CORiTEC 350i

CAM: *hyperDENT*® V8.1



In this validation test of DMTools from Dynamic Abutment Solutions, we tried to mechanize your solution of direct angled channels to an implant in Cobalt Chrome with a disc height of 15mm. Two different tools were used in the test resulting in a more and a less favorable outcome. The definition process is completely automated since *hyperDENT*® automatically recognizes the angled channels from the DAS library.

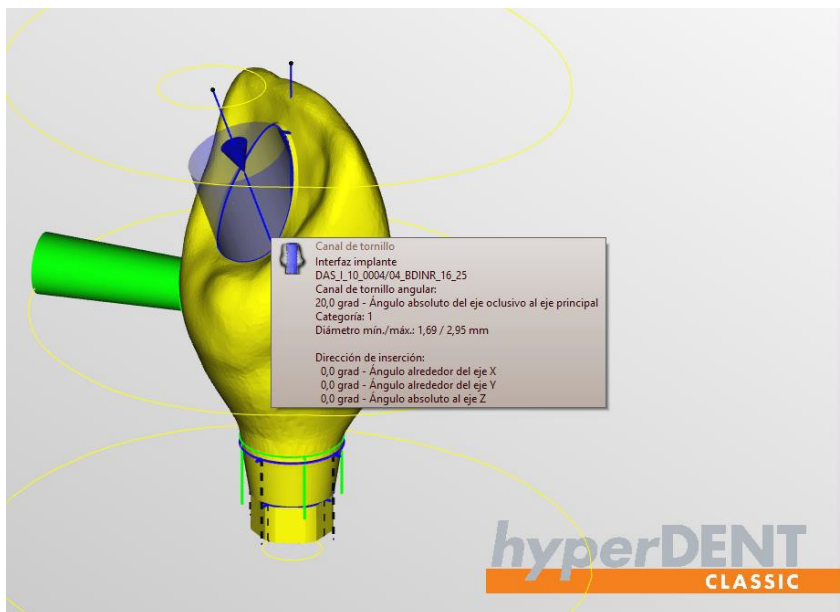


image 1: automated screw channel recognition





image 2: result tool 33.670.716.01-2

The tool used in the first case was the "33.670.716.01-2". This tool produced the most favorable outcome since the tool is the most stable. The perfect fit was achieved in 4 passes without the need to rework anything and no problems with the screw seat and internal thread.

The second machined unit resulted in the worst case with the weakest tool: "33.690.754.01-2". With this tool, the piece had to be repeated 2 times. Due to vibration issues, the screw seat did not finish well and it also broke.

A cooling problem occurred in the test machine, so the test of this second tool had to be postponed for a few weeks. After this and once the parameters were adjusted, the result was completely satisfactory again.



image 3:
result tool 33.690.754.01-2



image 4:
result tool 33.690.754.01-2

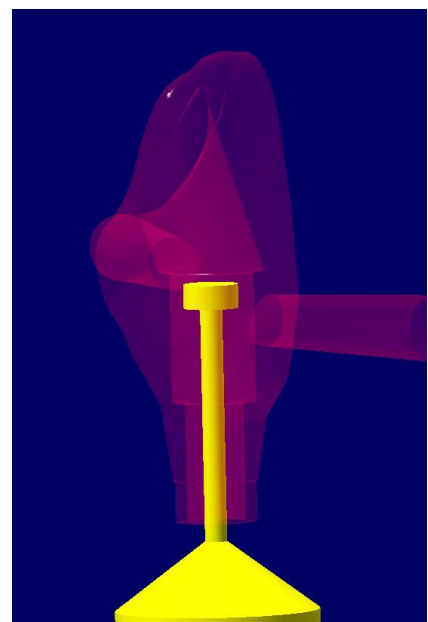


image 5:
work simulation

Companies:

FOLLOW-ME! Technology South Europe Srl
Sergio Guirao, Agustí Ripoll
info.see@follow-me-tech.com

Dynamic Abutment Solutions
Sebastian Sassi

About FOLLOW-ME!:

FOLLOW-ME! Technology Group develops and distributes one of the world's leading dental CAM software systems, *hyperDENT®*. Due to its modular product structure, *hyperDENT®* can be utilized with a myriad of milling machines. The high quality security mechanisms enable reliable production processes in which complex and stable toolpaths are generated. In addition to the Head Office in Munich, FOLLOW-ME! Technology Group has offices in Berlin, Germany as well as in Austria, Italy, Spain, China, Japan, Korea, Singapore and the USA.