

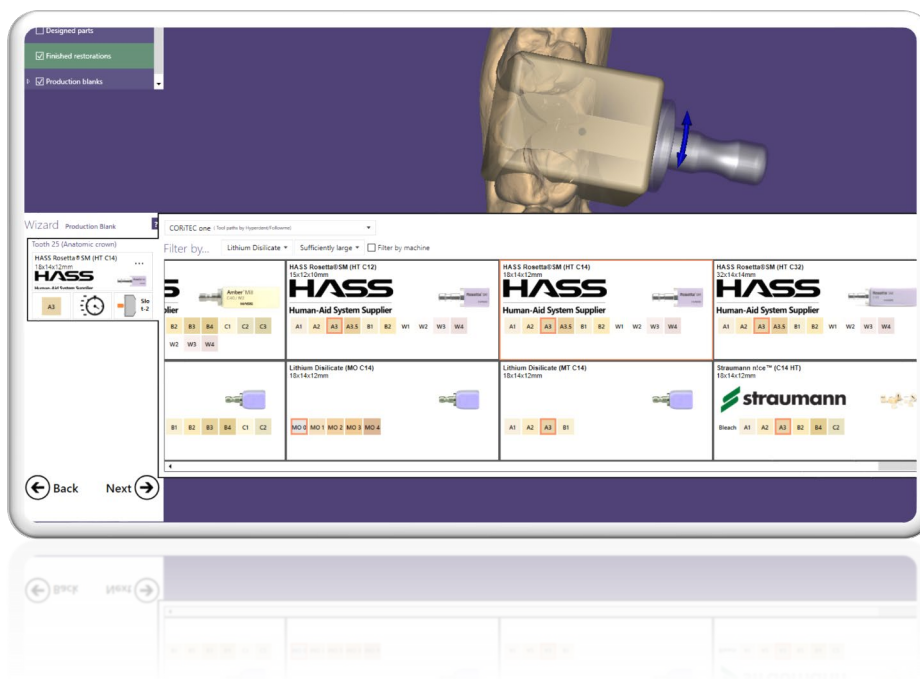
FOR IMMEDIATE RELEASE

*hyper*DENT exocad Connect

Complete CAM software integration in exocad

Munich, December 08, 2020: exocad ChairsideCAD, in combination with *hyper*DENT exocad Connect, offers a seamless CAM connection on all applicable machines for the direct production of dental restorations.

No CAM experience is required to process the resulting dental restorations, as *hyper*DENT exocad Connect works fully automatically in the background of exocad ChairsideCAD.



*hyper*DENT exocad Connect guarantees high-quality and precise manufacturing with optimal results throughout the entire work process - from the intraoral scan to the finished product. The user can choose from predefined quality levels which range from "Fast" and "Normal" to "Highly detailed".

"Our powerful ChairsideCAD software, which recently received the prestigious Cellerant "Best of Class" Technology Award for the second time in the USA, is characterized by a high degree of automation and user-friendly workflow," explains Novica Savic, CCO at exocad, and continues: "The integration of hyperDENT offers users the highest degree of flexibility and performance single-visit dentistry."

All machine manufacturers are also offered the option to integrate into the exocad ChairsideCAD and *hyperDENT* exocad Connect interface and to adapt it to their own requirements.

Experienced CAD/CAM dental technician:

"This is the next step towards cross-platform scanning and manufacturing in the dental industry. The user has the freedom to freely select the machine and applications for high-end manufacturing and to combine them into one workflow".



About FOLLOW-ME!:

FOLLOW-ME! Technology Group develops and distributes the world's leading dental CAM software systems, *hyperDENT*®. Due to its modular product structure, *hyperDENT*® can be utilized with a myriad of milling machines. The high quality security mechanisms enable reliable production processes in which complex and stable toolpaths are generated. In addition to the Head Office in Munich, FOLLOW-ME! Technology Group has offices in Berlin, Germany as well as in Austria, Italy, Spain, China, Japan, Korea, Singapore and the USA.